

Premier Pet™



Auto-Clean™ Litter Box System

GAL00-16695 | Product Manual



Have questions about your Litter Box
or need training tips for your pet?

Our Customer Care representatives are here to help you.

Call our USA-based Customer Care Center at

+1 (866) 381-2785

USA & Canada: Mon-Fri 8am-8pm EST | Sat 9am-5pm EST

This product includes a one-year warranty.

Call, click, or chat with us before you return your product.

premierpet.com

Hereinafter Radio Systems Corporation and any other affiliate or Brand of Radio Systems Corporation may be referred to collectively as “We” or “Us”.

IMPORTANT SAFETY INFORMATION

Explanation of Attention Words and Symbols used in this Product Manual

 This is the safety alert symbol. It is used to alert you to potential personal injury hazards. Obey all safety messages that follow this symbol to avoid possible injury or death.

⚠ WARNING WARNING indicates a hazardous situation which, if not avoided, could result in death or serious injury.

⚠ CAUTION CAUTION, used with the safety alert symbol, indicates a hazardous situation which, if not avoided, could result in minor or moderate injury.

CAUTION CAUTION, used without the safety alert symbol, indicates a hazardous situation which, if not avoided, could result in harm to your pet.

NOTICE NOTICE is used to address practices not related to personal injury.

⚠ WARNING

When using electric appliances, basic precautions should always be followed to reduce the risk of fire, electric shock, and/or injury including the following:

- To reduce risk of injury, close supervision is necessary when this product is used near children.
- Read all the instructions before using this product. Save these instructions for future reference.
- Do not submerge the litter box in water or other liquids.
- To protect against electric shock, do not place the unit, electrical power adaptor or plug in water or other liquids. If the plug of the device gets wet, turn off the electricity to that electrical outlet. Do not attempt to unplug.
- Do not place or store the unit where it can fall or be pulled into a tub or sink.
- Do not pull on the electrical power adaptor to remove the plug from the electrical outlet. To unplug, grasp the plug, not the power cord.
- Do not use accessories or attachments that are not recommended by the manufacturer as they may cause fire, electric shock, or injury.
- Do not operate if the unit has a damaged electrical power adaptor or plug, or if it is malfunctioning or has been damaged. Call the Customer Care Center immediately for further instructions.
- Pregnant women, babies, small children, and immune-deficient individuals should avoid contact with cat litter waste. Cat's waste may contain toxoplasmosis bacteria that can be harmful to these individuals.
- Packaging material is not a toy. Keep away from children and pets.
- Keep plastic waste bags away from babies and small children. Do not use in cribs, beds, carriages, or play pens. The thin film may cling to the nose and mouth and prevent breathing.
- This is not a toy. This product is a precision-operated appliance. Do not allow small children to play with, in, or around this device.
- Wash your hands after handling used cat litter.

⚠ CAUTION

- Do not contact moving parts.
- Do not allow anything to rest on the power cord. Do not plug in power adaptor in an area where people or animals may walk or trip on cord.
- Always unplug the unit when not in use, before putting on or taking off parts, and before cleaning.
- Do not disassemble the unit while plugged in.

CAUTION

- DO NOT ATTEMPT TO USE THIS PRODUCT FOR ANY OTHER PURPOSE. This product is designed for use with cats only. The litter box is intended solely for the safe elimination of cat waste. This device is not intended to harm, injure, or provoke. Using this product in a way that is not intended could result in violation of federal, state, or local laws.
- Adult supervision is recommended during your cat's initial introduction.
- If your kitten is under 6 months of age, leave the unit UNPLUGGED and scoop waste until kitten is 6 months old.
- Not intended for use by handicapped, incapacitated, or very old cats that might experience difficulty in entering or leaving the litter box.
- Auto-Clean™ Litter Box System should be used with healthy cats. We recommend that you take your cat to a veterinarian before using the litter box if he or she is not in good health.

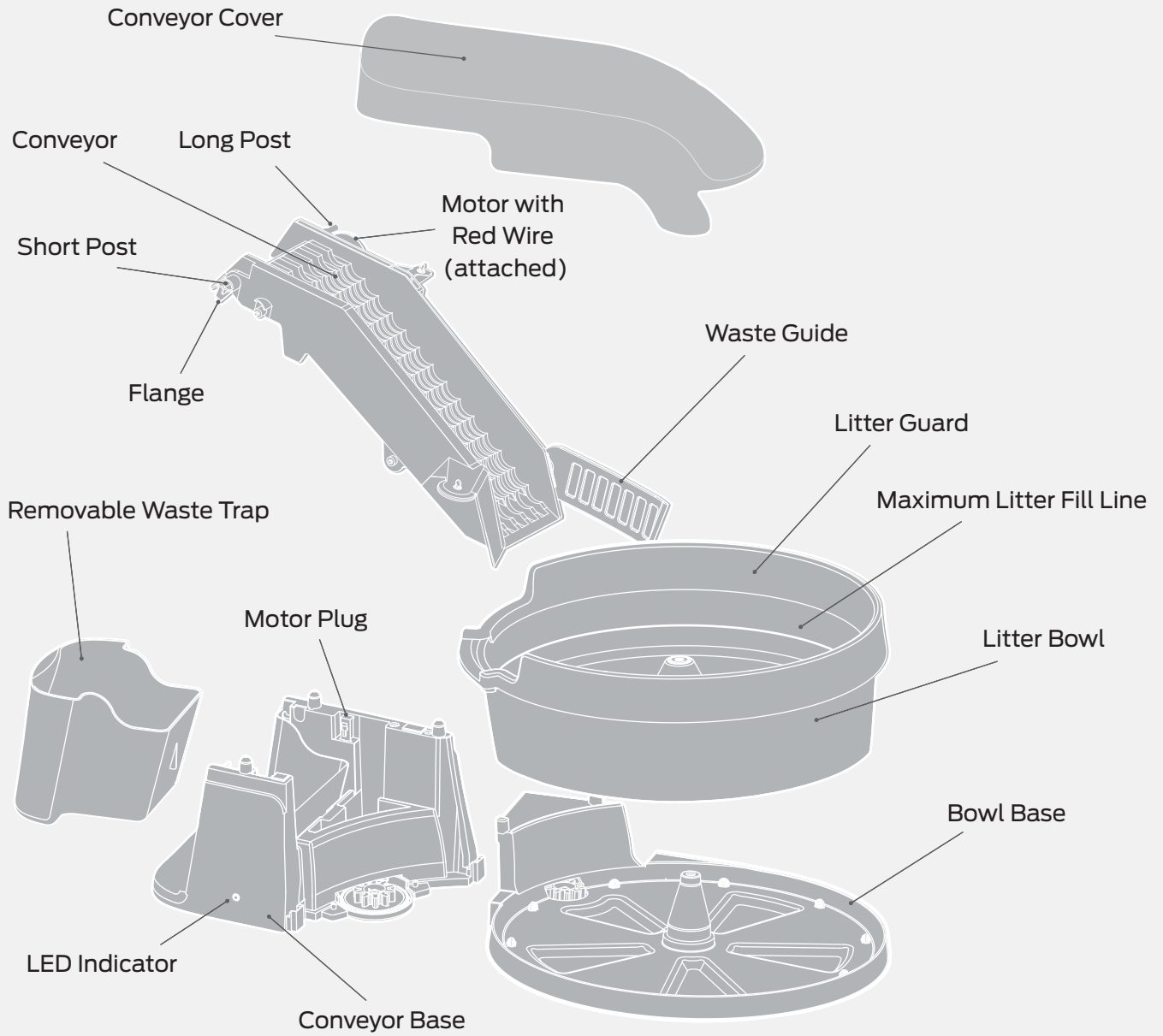
NOTICE

- Do not use outdoors. FOR INDOOR HOUSEHOLD USE ONLY.
- Remove all packaging material before connecting the power adaptor.
- This product should be placed on a level surface.
- ONLY USE PREMIUM CLUMPING, CLAY CAT LITTER. USING A DIFFERENT TYPE CAN CAUSE THE LITTER BOX TO MALFUNCTION.
- You must maintain the litter level at the fill line or the litter box may not operate properly.
- Best suited for cats 15 lb. or less.

SAVE THESE INSTRUCTIONS

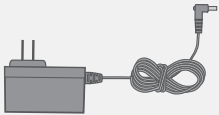
What's Included

FRONT VIEW

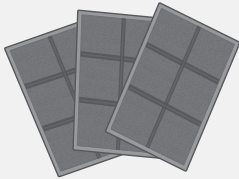


BACK VIEW

Power Adaptor

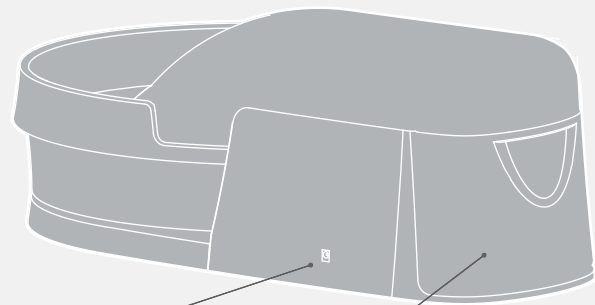


3 Carbon Filters



Power Connection

Removable Waste Trap

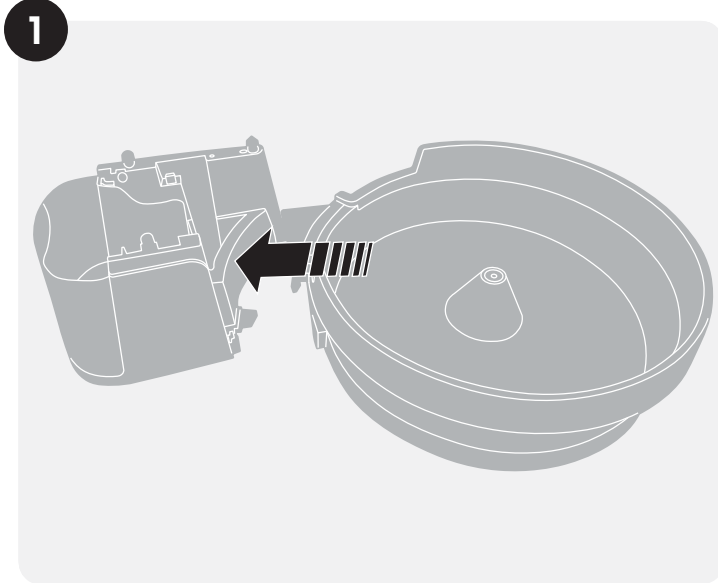


How It Works

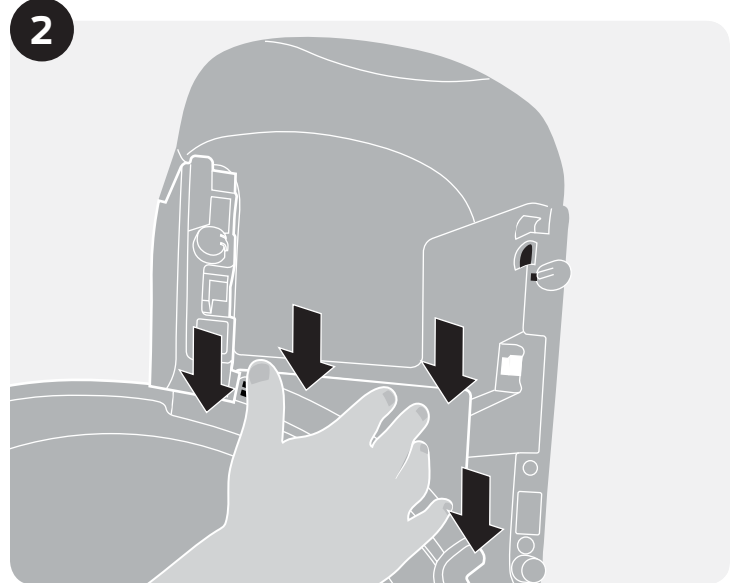
The Premier Pet™ Auto-Clean™ Litter Box System is an easy-to-use, automatic litter box that stays fresh and clean without scooping. The quiet, slow-moving system sifts litter for 30 minutes then turns off for 30 minutes, so it makes one full bowl rotation every 1 ½ hours. The solid waste is locked away in the waste trap, keeping it out of sight and reducing odor. The replaceable carbon filter acts as a second layer of odor defense. The LED light ensures the system is running and giving your cat a carefree, clean litter box. All you need is clumping litter and recycled bags for a quick and easy cleanup.

Setup Instructions

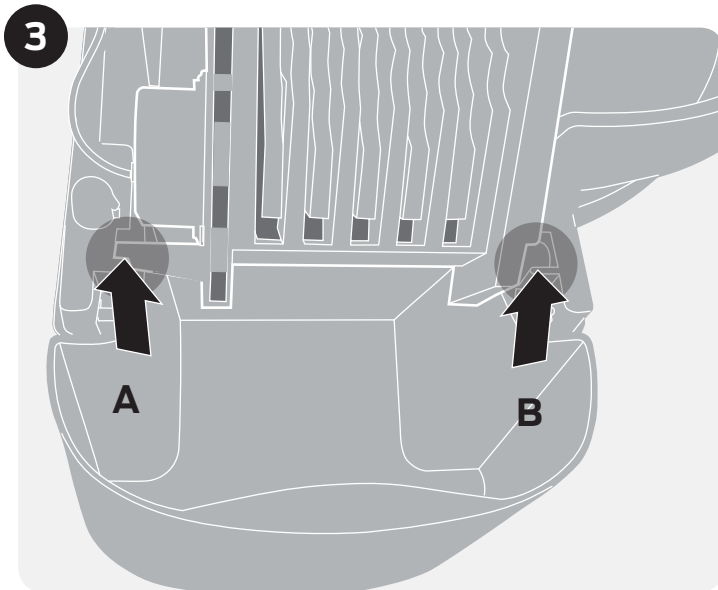
NOTE: The litter guard and conveyor cover must be installed correctly for the unit to operate properly and not cause a power outage. Safety features require that these pieces are installed correctly so the moving conveyor is never exposed.



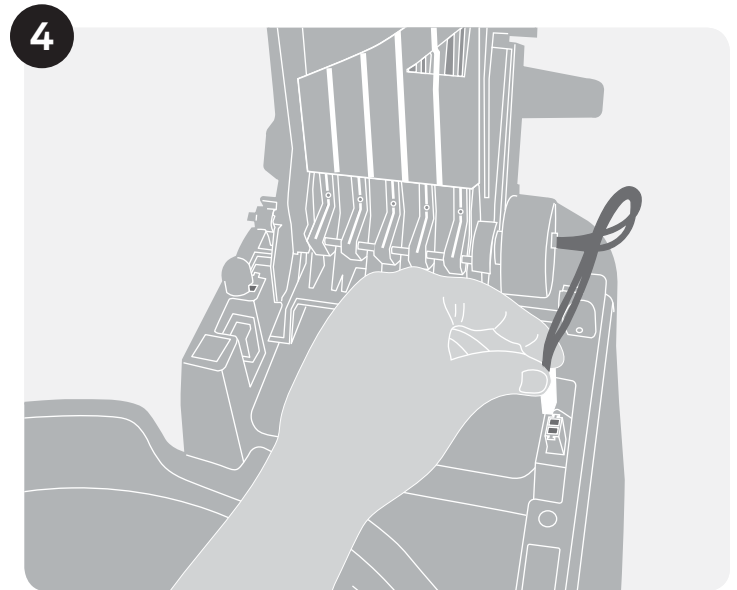
1. Remove the Auto-Clean™ and components from packaging. Place the litter box on a firm, flat surface. Attach the bowl base with the bowl (litter guard attached) on it to the conveyor base by lowering the bowl base onto the open end of the conveyor base.



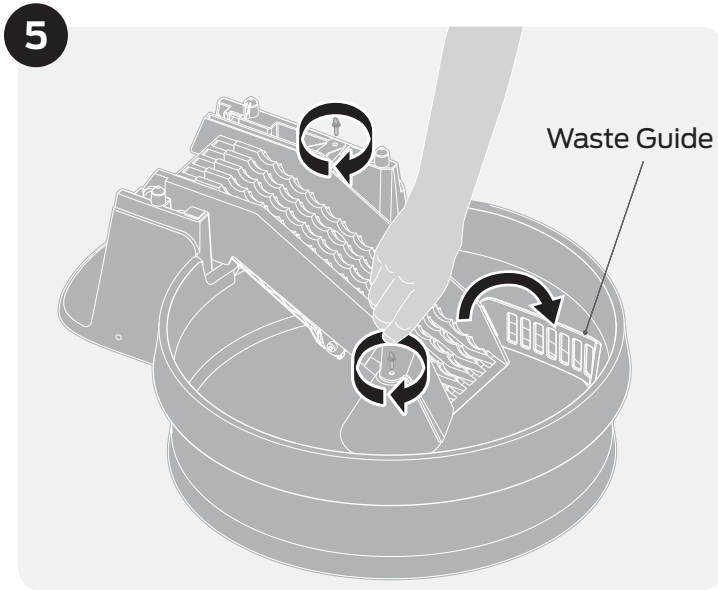
2. Press down firmly on the bowl base to ensure that it is snapped into place.



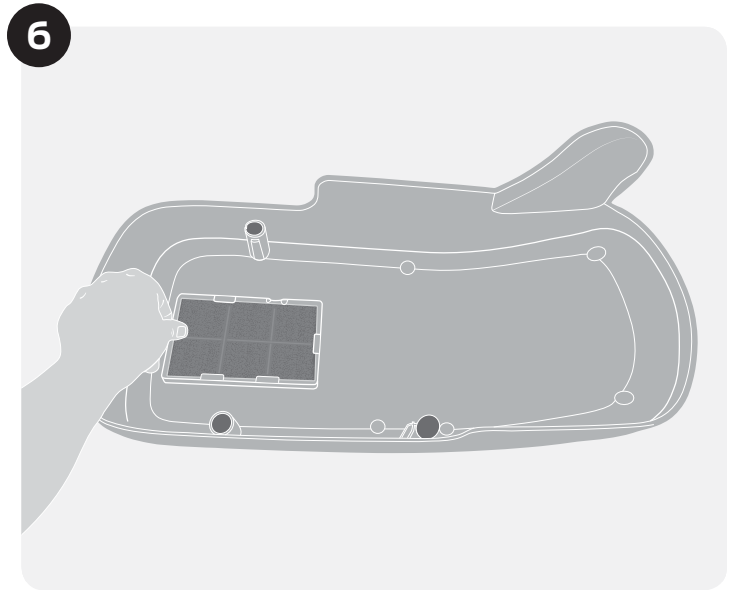
3. Install the conveyor by sliding the long post at the top (A) into the hole on the conveyor base. Then insert the short post (B) on the opposite side into the hole in the base by pressing it down into the hole with the flange pointing down.



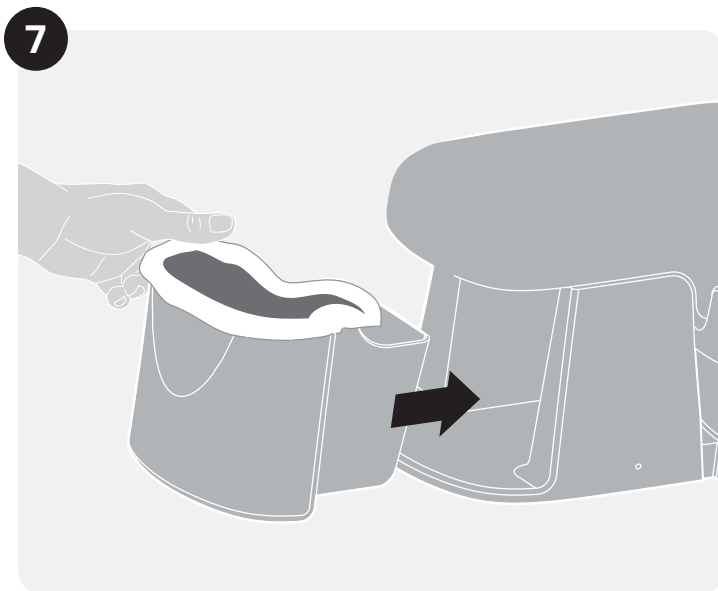
4. Leave the conveyor in the upright position, and plug in the motor. The motor plug is at the end of the red wire, and it clips into the conveyor base.



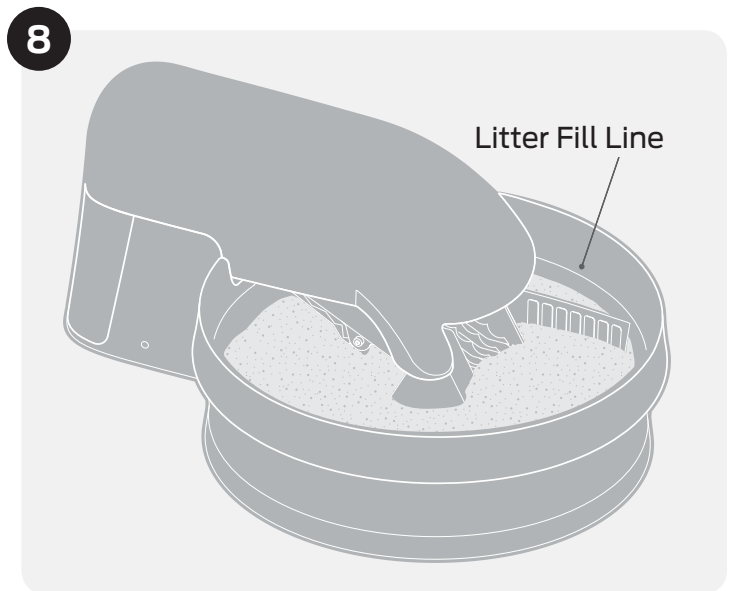
5. Lower the conveyor and tighten the thumb screws, then flip the waste guide down into place.



6. Place one carbon filter into the brackets on the inside of the conveyor cover. The black side of the filter should face outward. The carbon filter helps reduce odors from the waste trap area. Place the conveyor cover over the conveyor, making sure it is secure.



7. Use a plastic bag to line the waste trap. Insert the waste trap into the back of the litter box, making sure it is aligned and fully inserted into the unit. For additional help to minimize odors, add a small layer of clean litter and baking soda to the plastic waste bag or waste trap before placing it in the litter box.



8. Fill the litter bowl only with clumping, scoopable, clay cat litter to the maximum litter fill line. **Be sure to fill the bowl to the fill line, as leaving the box too empty or too full can cause issues.**

NOTE: The conveyor cover and waste trap must be aligned correctly and fully inserted in the unit to turn on the green indicator light. The green light must be on to supply power for the litter box to operate properly. If the light is blinking blue, then either the waste trap or conveyor cover are not in place.

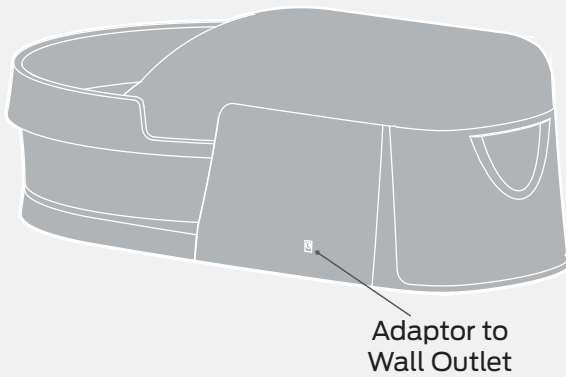
NOTICE

Only use premium clumping, clay cat litter. Using a different type can cause the litter box to malfunction. Maintain the litter level at the fill line or the litter box may not operate properly.

CAUTION

Do not allow anything to rest on the power cord. Do not plug in power adaptor in an area where people or animals may walk or trip on cord.

9



9. Insert the end of the power adaptor into the power connection on the back of the litter box. Plug it into a standard wall outlet. The green light on the litter box should illuminate. Your litter box is ready for use.

LED Indicator

LIGHT COLOR AND FUNCTION	WHAT IT MEANS
Solid Green	The unit is fully operational. The unit works in cycles of 30 minutes on then 30 minutes off, and the green light will still illuminate during the "off" cycles.
Blinking Blue	The waste trap or conveyor cover are not fully in place.
Solid Red	There is an issue with the conveyor motor. Unplug the unit and plug it back in. If the light turns red again after 10 minutes, please call our Customer Care Center at +1 (800) 381-2785.
Blinking Red	There is an issue with the bowl motor. Unplug the unit and plug it back in. If the light blinks red again after 10 minutes, please call our Customer Care Center at +1 (800) 381-2785.
Alternating Red and Blue	There is an issue with both the conveyor and bowl motors. Please unplug the unit, and call our Customer Care Center at +1 (800) 381-2785.

Tips & Maintenance

Transitioning Your Cat to the Litter Box

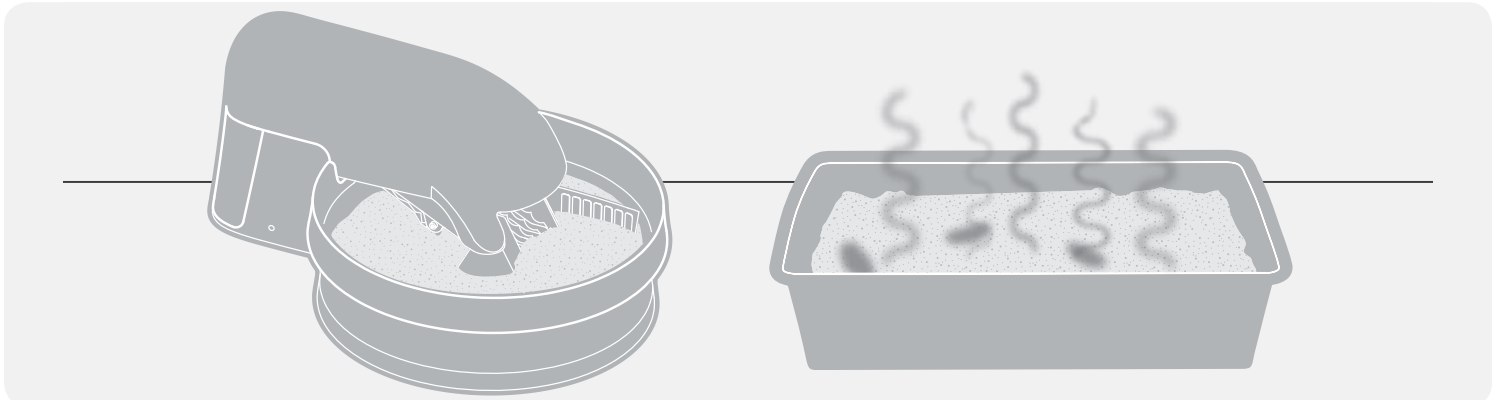
Most cats easily adapt to the Auto-Clean™ Litter Box System. Some cats may require an adjustment period to get used to their new litter box. Here are a few tips to help with the transition:

1. Place the new Auto-Clean™ Litter Box next to your cat's current litter box. Allow your cat to have access to both the old and new litter boxes for at least a week. This time may vary depending on the temperament of your cat.
2. Stop cleaning your cat's old litter box, allowing it to remain dirty. Cats prefer a clean litter box, and this will make the new litter box more appealing. Your cat should start using their new Auto-Clean™ Litter Box System.

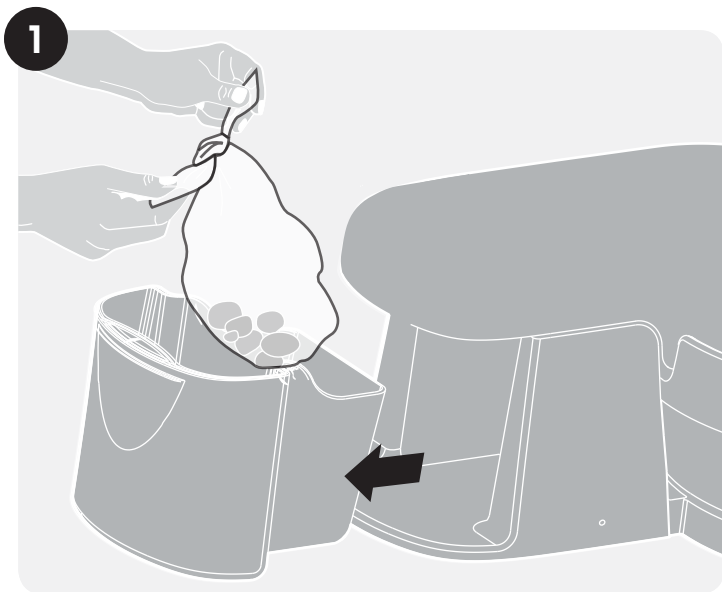
NOTE: Although the Auto-Clean™ Litter Box System is quiet while running, you may want to leave it unplugged for a few days so your cat can get used to the new box without any distractions. If you leave it unplugged, you need to manually scoop waste from the litter box until your cat is fully transitioned.

3. Once your cat has transitioned to the new litter box, just plug it in and remove the old litter box from the area.

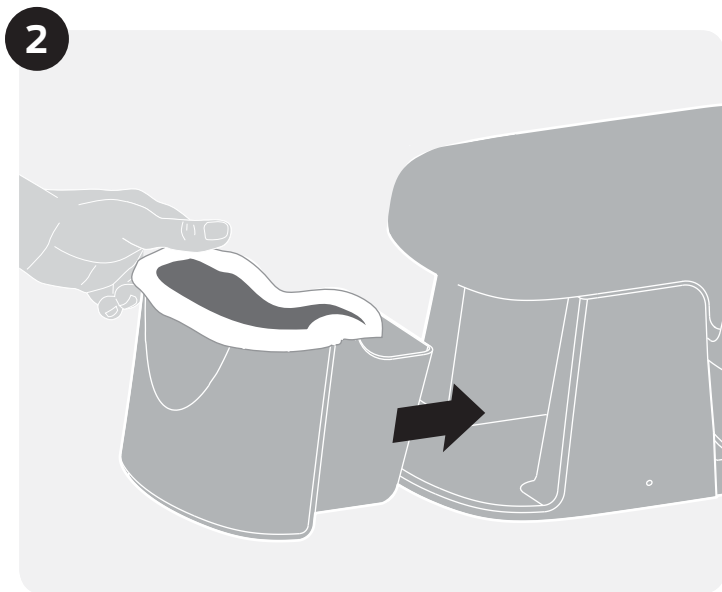
Waste Removal



We recommend disposing of any waste at least every other day, or more if you have more than one cat.



1. Remove the waste trap from the litter box. If using a plastic waste bag, tie the bag closed. Discard the waste material in the trash.



2. If desired, place a clean plastic waste bag in the trap. Replace the waste trap into the back of the litter box, ensuring it is aligned correctly and fully inserted in the unit.

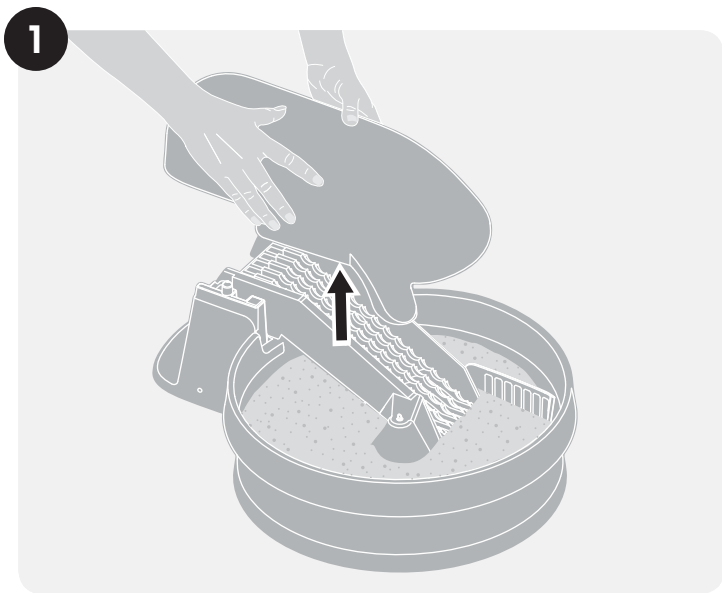
⚠ WARNING

Pregnant women, babies, small children, and immune-deficient individuals should avoid contact with cat litter waste. Cat's waste may contain toxoplasmosis bacteria that can be harmful to these individuals. Wash your hands after handling used cat litter and waste trap.

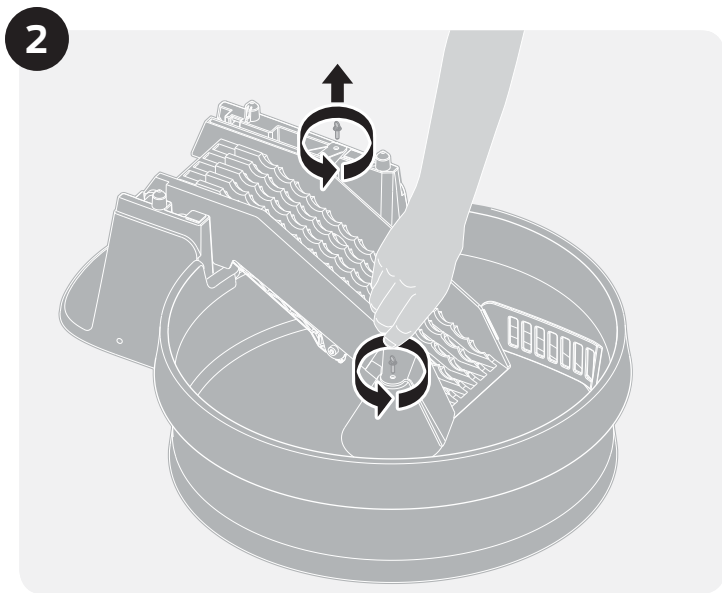
Cleaning

Routine general cleaning is recommended and necessary to keep the Auto-Clean™ Litter Box System operating at a high level of performance. We recommend cleaning the system every two weeks for a single-cat household.

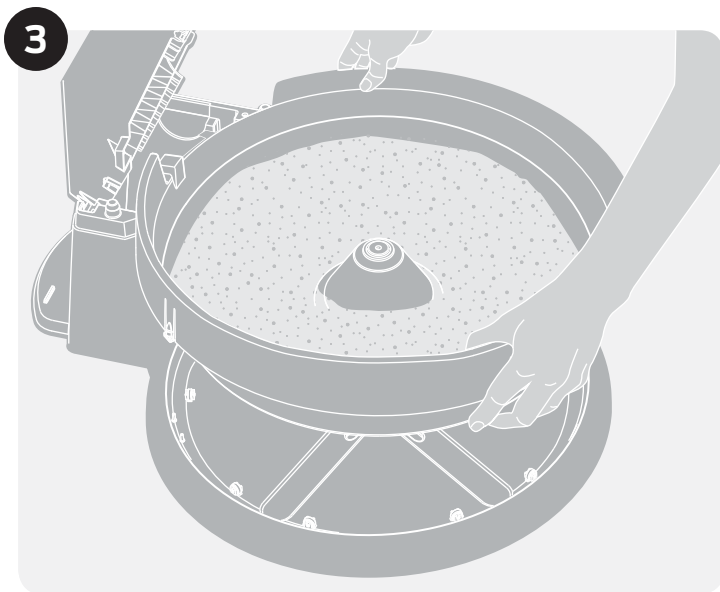
1. Unplug the power adaptor from the wall outlet, and disconnect it from the litter box.
2. Remove the waste trap and dispose of any waste.



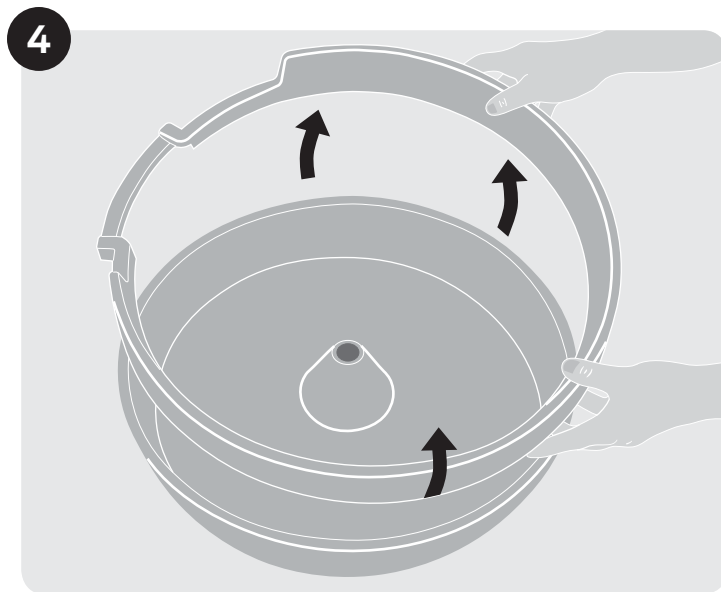
1. Remove the conveyor cover by lifting up on the sides, and dispose of the carbon filter (if needed).



2. Remove the thumb screws from the center of the litter bowl and top of the conveyor. Lift the conveyor to its upright position.



3. Lift up the litter bowl to remove it, and dispose of the used litter.



4. If further cleaning is needed, remove the litter guard. The litter bowl, litter guard, and waste trap can be submerged in water and washed with mild soap.

5. Rinse and thoroughly dry all parts before reassembling the unit. If needed, carefully clean the conveyor using only a damp cloth or sponge.

⚠ WARNING

Do not submerge or expose the electrical components to water or cleaning solutions. DO NOT submerge or expose the base unit, conveyor or any electrical components to water or cleaning solutions. DO NOT use bleach or chemicals to clean as they can act as a repellent to your cat.

⚠ CAUTION

Always unplug the unit when not in use, before putting on or taking off parts, and before cleaning.

Reassembly

1. Replace the litter bowl with litter guard on the base unit.
2. Follow steps 5-9 in the "Setup Instructions" section (pages 6-7).

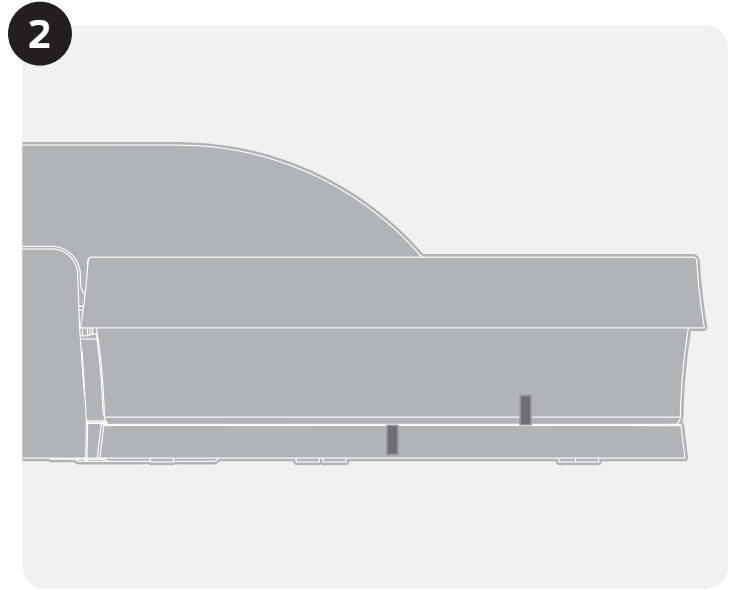
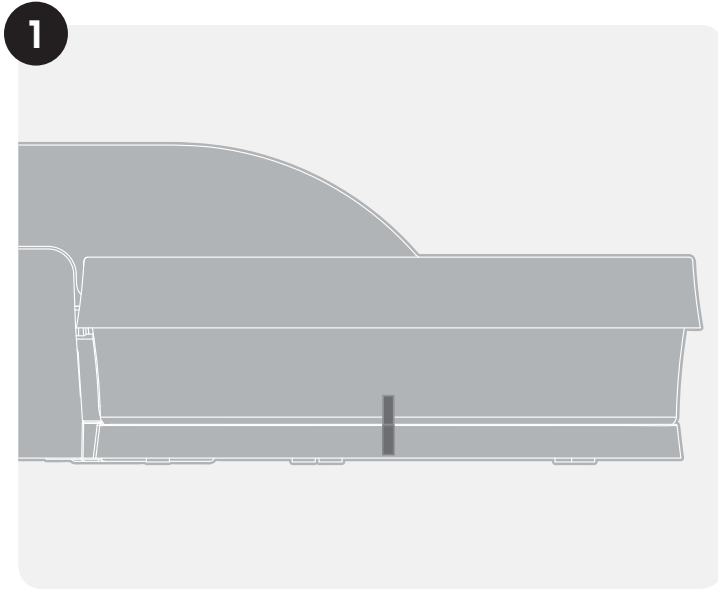
NOTE: The conveyor cover and waste trap must be aligned correctly and fully inserted in the unit to turn on the green indicator light. The green light must be on for the litter box to operate properly. If the light is blinking blue, then either the waste trap or conveyor cover are not in place.

NOTICE

Only use premium clumping, clay cat litter. Using a different type can cause the litter box to malfunction. Maintain the litter level at the fill line or the litter box may not operate properly.

Testing the Litter Box

The Auto-Clean™ Litter Box System cleans for 30 minutes then stops for 30 minutes, making one full rotation every 1½ hours. The bowl moves very slowly and is whisper-quiet, so your cat will not notice the movement.



1. To test if the litter box is rotating properly, place one piece of adhesive tape on the base of the unit and one piece of tape on the bowl of the unit.
2. After several minutes, the two pieces of tape should be several inches apart. Remove the tape when finished testing.

Frequently Asked Questions

Questions	Answers
Will the continuous movement of the Auto-Clean™ Litter Box System scare my cat?	No. The Auto-Clean™ Litter Box System has no exposed moving parts, and the litter bowl rotates at a rate of one rotation every 1½ hours. It is whisper-quiet and will not startle or disturb your cat.
Does the Auto-Clean™ Litter Box System reduce odor?	Yes. Since waste is continuously sifted and moved to the covered waste trap, you will notice a considerable reduction in odor compared to other litter boxes. To reduce odors even more, you can add some fresh litter and baking soda to the bottom of the lined or unlined waste trap. The carbon filter in the conveyor hood will also help to reduce odors in the waste trap area.
Do I need to purchase a special brand of cat litter?	No. Any clumping, scoopable, clay cat litter will work.
Do I need to purchase special waste trap bags?	No. You can use any small plastic waste/trash bag or no bag at all. If you don't use a bag, you might need to occasionally wash the waste trap.
How often do I need to empty the waste trap?	Depending on the level of use and how many cats you have, we recommend that you empty the waste trap when it is nearly full, or every other day, to better reduce odors.
Will I use more litter than my traditional litter box?	No. The Auto-Clean™ Litter Box System uses less litter than most traditional litter boxes, since there is no daily scooping and refilling.

Troubleshooting

LED Indicator

LIGHT COLOR AND FUNCTION

WHAT IT MEANS

Solid Green	The unit is fully operational. The unit works in cycles of 30 minutes on then 30 minutes off, and the green light will still illuminate during the “off” cycles.
Blinking Blue	The waste trap or conveyor cover are not fully in place.
Solid Red	There is an issue with the conveyor motor. Unplug the unit and plug it back in. If the light turns red again after 10 minutes, please call our Customer Care Center at +1 (800) 381-2785.
Blinking Red	There is an issue with the bowl motor. Unplug the unit and plug it back in. If the light blinks red again after 10 minutes, please call our Customer Care Center at +1 (800) 381-2785.
Alternating Red and Blue	There is an issue with both the conveyor and bowl motors. Please unplug the unit, and call our Customer Care Center at +1 (800) 381-2785.

PROBLEM

SOLUTION

Waste is breaking into small pieces and falling through the spaces in conveyor	<p>Make sure you are only using clumping, scoopable, clay cat litter.</p> <p>Make sure to keep bowl filled at or below the maximum litter level fill line for best results. Occasional manual scooping may be needed.</p>
Litter is gathering at base of conveyor or behind conveyor	<p>The bowl may be filled with too much litter. Make sure the bowl is not filled above the maximum litter level fill line. Use a scoop to redistribute litter or remove excess litter from the bowl.</p> <p>Make sure the waste guide is in the lowered position to help move waste up the conveyor.</p>
Unit makes a grinding noise when bowl rotates	The unit may need cleaning (see “Cleaning” section). Make sure there is no stray litter between the litter bowl and the base of the litter box.
Conveyor is not moving waste into waste trap or is running backwards	<p>Test the bowl to make sure it is rotating (see “Testing the Litter Box” section).</p> <p>Unplug the power adaptor from the wall and disconnect from the litter box. Wait 20 seconds, then securely reconnect the power adaptor and plug into a standard wall outlet. If the problem continues, call our Customer Care Center at +1 (800) 381-2785.</p>
Motor seems to be overheating, clicking, or making unusual sounds	Unplug the unit and call our Customer Care Center at +1 (800) 381-2785.
Green indicator light is not on or the unit is not receiving power	<p>Make sure adaptor is securely connected to unit and plugged into a standard wall outlet.</p> <p>Make sure the litter guard is installed under conveyor and the conveyor cover and waste trap are installed correctly. There are safety features that require these pieces to be installed properly for the unit to operate (see “Setup Instructions” section).</p>

Terms of Use and Limitation of Liability

1. Terms of Use

The use of this product is subject to your acceptance without modification of the terms, conditions, and notices contained with this product. Use of this product implies acceptance of all such terms, conditions, and notices. If you do not wish to accept these terms, conditions, and notices, please return the product, unused, in its original packaging and at your own cost and risk to the relevant Customer Care location together with proof of purchase for a full refund.

2. Proper Use

Proper Use includes, without limitation, reviewing the entire Product Manual and any specific safety information statements. The specific temperament or size/weight of your pet may not be suitable for this product. If you are unsure whether this product is appropriate for your pet, please consult your veterinarian or certified trainer prior to use. For products used with pets where training is desired, Radio Systems Corporation recommends that these training products are not used if your pet is aggressive and accepts no liability for determining suitability in individual cases.

3. No Unlawful or Prohibited Use

This product is designed for use with pets only. This product is not intended to harm, injure, or provoke. Using this product in a way that is not intended could result in violation of Federal, State, or local laws.

4. Limitation of Liability

In no event shall Radio Systems Corporation or any of its associated companies be liable for (i) any direct, indirect, punitive, incidental, special or consequential damage and/or (ii) any loss or damages whatsoever arising out of or connected with the use or misuse of this product. The Purchaser assumes all risks and liability from the use of this product to the fullest extent permissible by law.

5. Modification of Terms and Conditions

Radio Systems Corporation reserves the right to change the terms, conditions, and notices governing this product from time to time. If such changes have been notified to you prior to your use of this product, they shall be binding on you as if incorporated herein.

Compliance

FCC: USA

This device complies with part 15 of the FCC Rules. Operation is subject to the following two conditions: (1) This device may not cause harmful interference, and (2) this device must accept any interference received, including interference that may cause undesired operation.

NOTE: This equipment has been tested and found to comply with the limits for a Class B digital device, pursuant to part 15 of the FCC Rules. These limits are designed to provide reasonable protection against harmful interference in a residential installation. This equipment generates, uses, and can radiate radio frequency energy and, if not installed and used in accordance with the instructions, may cause harmful interference to radio communications. However, there is no guarantee that interference will not occur in a specific installation. If interference does occur to radio or television reception, which can be determined by turning the equipment off and on, the user is encouraged to try to correct the interference by one or more of the following measures:

- Reorient or relocate the receiving antenna.
- Increase the separation between the equipment and the receiver.
- Connect the equipment to an outlet on a circuit different from that to which the receiver is connected.
- Consult customer care, the dealer, or an experienced radio/TV technician for help.

CAUTION: Modification or changes to this equipment not expressly approved by Radio Systems Corporation may void the user's authority to operate the equipment.

Warranty

One Year Non-Transferable Limited Warranty

This product has the benefit of a limited manufacturer's warranty. Complete details of the warranty applicable to this product and its terms can be found at www.premierpet.com.



Important Recycling Advice

Please respect the Waste Electrical and Electronic Equipment regulations in your country. This equipment must be recycled. At the end of the product life, do not place it in the normal municipal waste system. Please check the regulations in your area or return it to where it was purchased so that it can be placed in our recycling system. If these options are not possible, please contact the Customer Care Center for further information.

Radio Systems Corporation
10427 PetSafe Way
Knoxville, TN 37932
+1 (866) 381-2785
premierpet.com
SFE400-2309

©2018 Radio Systems Corporation