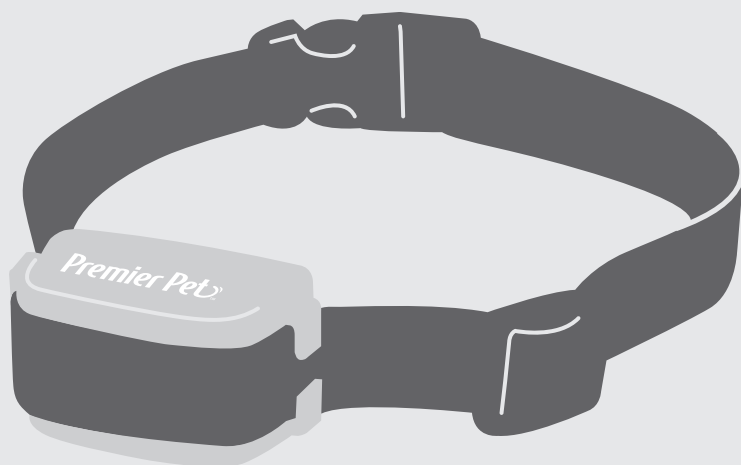




## Bark Collar

GBC00-16295 | Product Manual



Have questions about your Bark Collar or need training tips for your pet?

**Our Customer Care representatives are here to help you.**

Call our USA-based Customer Care Center at

**+1 (866) 381-2785**

USA & Canada: Mon-Fri 8am-8pm EST | Sat 9am-5pm EST

This product includes a one year warranty.

Call, click, or chat with us before you return your product.

[premierpet.com](http://premierpet.com)

# Important Safety Information

## Explanation of Attention Words and Symbols used in this product manual



This is the safety alert symbol. It is used to alert you to potential personal injury hazards. Obey all safety messages that follow this symbol to avoid possible injury or death.

### **⚠ WARNING**

**WARNING**, indicates a hazardous situation which, if not avoided, could result in death or serious injury.

### **⚠ CAUTION**

**CAUTION**, used with the safety alert symbol, indicates a hazardous situation which, if not avoided, could result in minor or moderate injury.

### **CAUTION**

**CAUTION**, used without the safety alert symbol, indicates a hazardous situation which, if not avoided, could result in harm to your pet.

---

### **⚠ WARNING**

- There is a risk of explosion if a battery is replaced by an incorrect type. Do not short circuit, mix old and new batteries, dispose of in fire or expose to water. When batteries are stored or disposed, they must be protected from shorting. Dispose of used batteries properly.
- Do not use this product if your dog is prone to aggressive behavior. Aggressive dogs can cause severe injury and even death to their owner and others. If you are unsure whether this product is appropriate for your dog, please consult your veterinarian or a certified trainer.

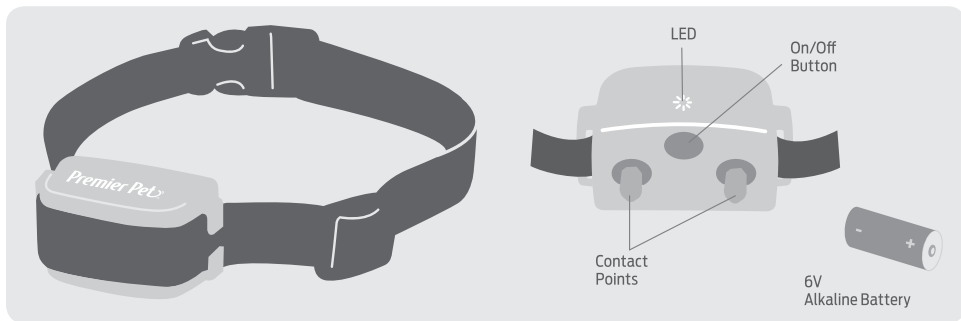
### **⚠ CAUTION**

- This product is not a toy. Keep it away from the reach of children. Use it only as a bark deterrent.

### **CAUTION**

- Proper fit of the collar is important. A collar worn for too long or made too tight on the pet's neck may cause skin damage ranging from redness to pressure ulcers. This condition is commonly known as bed sores.
- Avoid leaving the collar on a pet for more than 12 hours per day.
- When possible reposition the collar on the pet's neck every 1 to 2 hours.
- Regularly recheck the fit to prevent excessive pressure; follow the instructions in this manual.
- You may need to trim the hair in the area of the contact points. However, never shave the dog's neck; this may lead to a rash or infection.
- Never connect a leash to a collar with contact points. It will cause excessive pressure on the contact points.
- When connecting a leash to a separate collar, do not allow it to put pressure on the collar.
- Wash the dog's neck area and the contact points of the collar weekly with a damp cloth.
- Examine the contact area daily for signs of a rash or a sore.
- If a rash or sore is found, discontinue using this product until the skin has healed.
- If the condition persists beyond 48 hours, see your veterinarian.
- This product is only for use with healthy pets. If you're not certain that your pet is in good health, we recommend that you take your pet to a veterinarian before using this product.

## What's Included



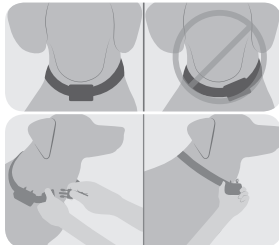
## How it Works

The Premier Pet™ Bark Collar effectively deters barking when it is worn. It has 15 levels of static correction and begins with low-level corrections. If excessive barking continues, the correction intensity will increase with each successive bark until the barking stops. Once the dog has learned to reduce the barking, the initial warning corrections are reduced. As a built-in safety feature, if your dog barks 15 times or more within a 1 minute 20 second period, the Bark Collar will automatically shut off for 3 minutes.

## Fit the Collar

**Important: The proper fit and placement of your collar is important for effective operation.**

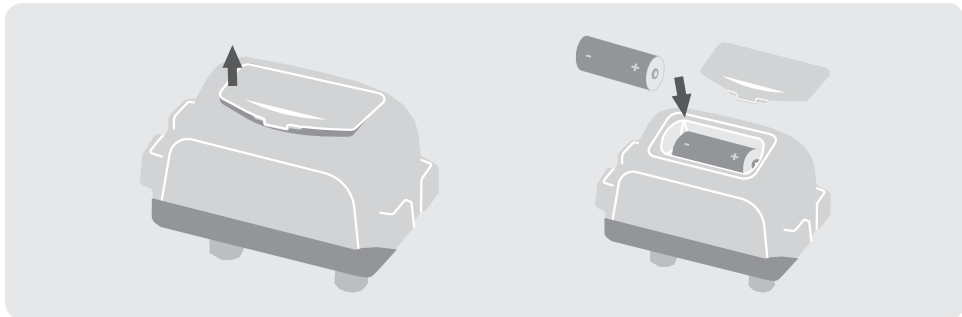
1. Start with the collar turned off and your dog standing comfortably, not sitting.
2. Remove all other collars your dog may be wearing and place the Bark Collar around his neck. Place the collar on your pet so that the Premier Pet™ logo is right side up and the collar is directly under your dog's chin. Center the contact points underneath your dog's neck, touching the skin. *NOTE: It is sometimes necessary to trim the hair around the contact points to make sure that contact is consistent.*
3. Check the tightness of the Bark Collar by inserting one finger between the end of a contact point and your dog's neck. The fit should be snug but not constricting.
4. Allow your dog to wear the Bark Collar for several minutes, then recheck the fit. Check the fit again as your dog becomes more comfortable with the Bark Collar.
5. Once you are satisfied with the fit of the receiver collar, then you may trim any excess collar strap as follows:
  - A. Mark the desired length of the receiver collar with a pen. Allow for growth if your pet is young or grows a thick winter coat.
  - B. Remove the receiver collar from your pet and cut off the excess.
  - C. Before placing the receiver collar back onto your pet, seal the edge of the cut collar by applying a flame along the frayed edge.



### CAUTION

Do not shave the pet's neck as this may increase the risk of skin irritation. The Bark Collar should not be worn for more than 12 hours out of every 24-hour period. Leaving the collar on too long could lead to skin irritation.

## Insert Battery



1. Press the latch, pull up and remove the battery door.
2. Insert the battery, ensuring that the + (plus) and – (minus) terminals are aligned correctly.
3. Replace the battery door.

### Battery Life

Average battery life is 2 months, depending on how often your dog barks. However, due to greater use during your dog's training, your first batteries may not last as long as replacement batteries.

### Low Battery Indicator

During normal operation the LED will flash 1 time every 5 seconds to indicate good battery, or 3 times every 5 seconds to indicate low battery.

---

## Turn Collar On/Off

### On

Press and hold the On/Off button until you hear a beep, and then release. The LED will flash 3 times then flash once every 5 seconds (3 quick flashes when the battery is low).

### Off

Press and hold the On/Off button until you hear a beep, and then release. The LED will flash 5 times and the bark collar turns off.

---

## Test the Collar

1. Begin with the collar off.
2. Press and hold the On/Off button until you hear a beep, and then release. The LED will flash 3 times.
3. Wait 10 seconds. The LED will continue to flash indicating the battery level.
4. Press and hold the On/Off button. The LED will illuminate red, the collar will beep, then the LED will flash 5 times and the bark collar turns off. Continue to press the On/Off button.
5. Wait 5 seconds, the LED will appear and stay solid to indicate the collar is now in Test Mode.
6. Release the On/Off button.
7. The collar will beep, once for each level of correction, up to level 15. Then, it will sound the normal power off tone and turn itself off.
8. The test can be stopped at any time by pressing the On/Off button.

---

## What to Expect

### Important: Do not leave your dog alone the first few times he receives a static correction.

Place the Bark Collar properly on your dog and wait nearby until he barks. Most dogs will understand very quickly that the Bark Collar is disrupting their urge to bark and will relax and stop barking. Because the static correction from the Bark Collar may be surprising or startling at first, some dogs may bark more at the initial correction. On rare occasions, a dog may get into a bark-correction-bark-correction cycle. If this happens, reassure your dog with calm, soothing tones. As your dog relaxes, he will understand that if he becomes quiet, he will not receive any more static corrections. The small minority of dogs that have this reaction will only have it the first time they wear the Bark Collar. You should notice a reduction in your dog's barking within the first couple of days that he wears the Bark Collar. At this point, it is important to remember the learning process is still not complete.

Dogs will "test" this new learning experience and will increase their attempts to bark. This usually occurs during the second week a dog wears the Bark Collar. If this does occur, remain consistent and do not alter your use of the Bark Collar. You must place the Bark Collar on your dog in every situation when you want him to be quiet.

---

## Tips & Maintenance

- Check Contact Points for tightness weekly.
- Clean Contact Points with a damp cloth weekly.
- Check your dog's neck for irritation and wash neck daily.

## Terms of Use and Limitation of Liability

### 1. **Terms of Use**

The use of this product is subject to your acceptance without modification of the terms, conditions and notices contained with this product. Use of this product implies acceptance of all such terms, conditions, and notices. If you do not wish to accept these terms, conditions, and notices, please return the Product, unused, in its original packaging and at your own cost and risk to the relevant Customer Care location together with proof of purchase for a full refund.

### 2. **Proper Use**

Proper Use includes, without limitation, reviewing the entire Product Manual and any specific safety information statements. The specific temperament or size/weight of your pet may not be suitable for this product. If you are unsure whether this Product is appropriate for your pet, please consult your veterinarian or certified trainer prior to use. For products used with pets where training is desired, Radio Systems Corporation recommends that these training products are not used if your pet is aggressive and accepts no liability for determining suitability in individual cases.

### 3. **No Unlawful or Prohibited Use**

This product is designed for use with pets only. This product is not intended to harm, injure or provoke. Using this product in a way that is not intended could result in violation of Federal, State or local laws.

### 4. **Limitation of Liability**

In no event shall Radio Systems Corporation or any of its associated companies be liable for (i) any direct, indirect, punitive, incidental, special or consequential damage and/or (ii) any loss or damages whatsoever arising out of or connected with the use or misuse of this product. The Purchaser assumes all risks and liability from the use of this product to the fullest extent permissible by law.

### 5. **Modification of Terms and Conditions**

Radio Systems Corporation reserves the right to change the terms, conditions and notices governing this product from time to time. If such changes have been notified to you prior to your use of this product, they shall be binding on you as if incorporated herein.

---

## Warranty

### **One Year Non-Transferable Limited Warranty**

This Product has the benefit of a limited manufacturer's warranty. Complete details of the warranty applicable to this Product and its terms can be found at [premierpet.com](http://premierpet.com).

---

## Compliance FCC

This device complies with part 15 of the FCC Rules. Operation is subject to the following two conditions: (1) This device may not cause harmful interference, and (2) this device must accept any interference received, including interference that may cause undesired operation.

**NOTE:** This equipment has been tested and found to comply with the limits for a Class B digital device, pursuant to part 15 of the FCC Rules. These limits are designed to provide reasonable protection against harmful interference in a residential installation. This equipment generates, uses, and can radiate radio frequency energy and, if not installed and used in accordance with the instructions, may cause harmful interference to radio communications. However, there is no guarantee that interference will not occur in a specific installation. If interference does occur to radio or television reception, which can be determined by turning the equipment off and on, the user is encouraged to try to correct the interference by one or more of the following measures:

- Reorient or relocate the receiving antenna.
- Increase the separation between the equipment and the receiver.
- Connect the equipment to an outlet on a circuit different from that to which the receiver is connected.
- Consult customer care, the dealer, or an experienced radio/TV technician for help.

**CAUTION:** Modification or changes to this equipment not expressly approved by Radio Systems Corporation may void the user's authority to operate the equipment.



### **Important Recycling Advice**

Please respect the Waste Electrical and Electronic Equipment regulations in your country. This equipment must be recycled. At the end of the product life, do not place it in the normal municipal waste system. Please check the regulations in your area or return it to where it was purchased so that it can be placed in our recycling system. If these options are not possible, please contact the Customer Care Centre for further information.



### **Battery Disposal**

Separate collection of spent batteries is required in many regions; check the regulations in your area before discarding spent batteries. At the end of the product life, please contact our Customer Care Centre to receive instructions on proper disposal of the unit. Please do not dispose of the unit in household or municipal waste.





# Premier Pet<sup>TM</sup>