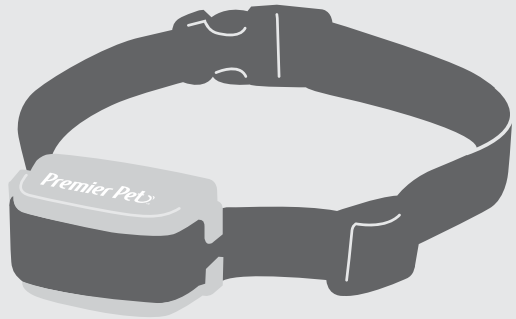


300 Yard Trainer

GDT00-16298 | Product Manual



Have questions about your Remote Trainer or need training tips for your pet?

Our Customer Care representatives are here to help you.

Call our USA-based Customer Care Center at

+1 (866) 381-2785

USA & Canada: Mon-Fri 8am-8pm EST | Sat 9am-5pm EST


This product includes a one year warranty.

Call, click, or chat with us before you return your product.

premierpet.com

Important Safety Information

Explanation of Attention Words and Symbols used in this guide

-  This is the safety alert symbol. It is used to alert you to potential personal injury hazards. Obey all safety messages that follow this symbol to avoid possible injury or death.

⚠ WARNING **WARNING** indicates a hazardous situation which, if not avoided, could result in death or serious injury.

⚠ CAUTION **CAUTION**, used with the safety alert symbol, indicates a hazardous situation which, if not avoided, could result in minor or moderate injury.

CAUTION **CAUTION**, used without the safety alert symbol, indicates a hazardous situation which, if not avoided, could result in harm to your pet.

⚠ WARNING

- Do not use this product if your dog is prone to aggressive behavior. Aggressive dogs can cause severe injury and even death to their owner and others. If you are unsure whether this product is appropriate for your dog, please consult your veterinarian or a certified trainer.
- This device contains Lithium-Ion (Li-Ion) batteries; never incinerate, puncture, deform, short-circuit, or charge with an inappropriate charger. Fire, explosion, property damage, or bodily harm may occur if this warning is not followed.

⚠ CAUTION

- It is vitally important that you and your pet remain safe while learning during on-leash training. Your pet should be on a strong leash, long enough for him to attempt to chase an object, but short enough for him not to reach a road or other hazard. You must be physically strong enough to restrain your pet if he tries to chase something.
- This product is not a toy. Keep away from children.

CAUTION

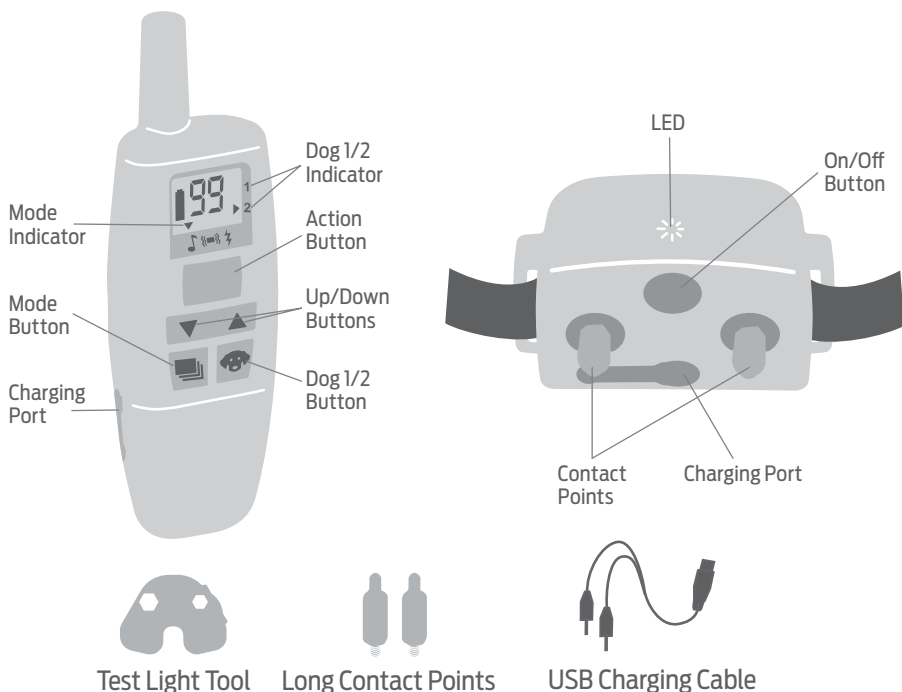
- Proper fit of the collar is important. A collar worn for too long or made too tight on the pet's neck may cause skin damage ranging from redness to pressure ulcers. This condition is commonly known as bed sores.
- Avoid leaving the collar on a pet for more than 12 hours per day.
- When possible, reposition the collar on the pet's neck every 1 to 2 hours.
- Regularly recheck the fit to prevent excessive pressure; follow the instructions in this manual.
- You may need to trim the hair in the area of the contact points. However, never shave the dog's neck; this may lead to a rash or infection.
- Never connect a leash to a collar with contact points. It will cause excessive pressure on the contact points.
- When connecting a leash to a separate collar, do not allow it to put pressure on the collar.
- Wash the dog's neck area and the contact points of the collar weekly with a damp cloth.
- Examine the contact area daily for signs of a rash or a sore.
- If a rash or sore is found, discontinue using this product until the skin has healed.
- If the condition persists beyond 48 hours, see your veterinarian.
- For additional information on bed sores and pressure necrosis, please visit our website.
- This product is only for use with healthy pets. If you're not certain that your pet is in good health, we recommend that you take your pet to a veterinarian before using this product.

How it Works

The Premier Pet® Remote Trainer can be used to both stop bad behaviors and teach your dog good behaviors. The trainer has tone (beep), vibration and 99 levels of static simulation. The easy-to-use design only requires a press of the action button and the signal is sent to the collar. A second collar can be added to the same remote (extra collar sold separately) for a 2-dog trainer. The collar is waterproof.

- **Tone:** beeps to get your dog's attention or mark a behavior.
- **Vibration:** vibrates the training collar.
- **Static Stimulation:** administers a stimulation with 99 levels of intensity.

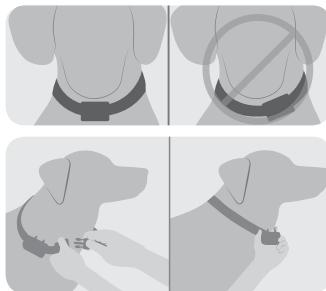
What's Included



Fit the Collar

Important: The proper fit and placement of your training collar is important for effective operation.

1. Start with the collar turned off and your dog standing comfortably, not sitting.
2. Place the collar on your pet so that the Premier Pet™ logo is right side up and the collar is directly under your dog's chin. Center the contact points underneath your dog's neck, touching the skin. *NOTE: It is sometimes necessary to trim the hair around the contact points to make sure that contact is consistent.*
3. Check the tightness of the collar by inserting one finger between the end of a contact point and your dog's neck. The fit should be snug but not constricting.
4. Allow your dog to wear the collar for several minutes, then recheck the fit. Check the fit again as your dog becomes more comfortable with the collar.



CAUTION

Do not shave the pet's neck as this may increase the risk of skin irritation. The collar should not be worn for more than 12 hours out of every 24-hour period. Leaving the collar on too long could lead to skin irritation.

Charge the Collar and Remote

Excessive charging can shorten battery life. Only charge your remote or collar when the batteries are low.

1. Lift the cover protecting the charging port and connect the charger to the collar and/or remote.
2. Plug the opposite end of the charger into a compatible charging port.
3. Plug in and fully charge the remote and the training collar. The battery icon on the remote will cycle while charging and then remain solid when it is fully charged. The LED on the training collar will be solid red when charging and will turn off when the training collar is fully charged.
4. When the training collar and remote are charged, replace their rubber covers. The mud plug covering the charging port must be in place for the collar to be waterproof.

NOTE: The remote is always on, and the display will appear when any button is pressed.

Turn the Collar On/Off

To Turn the Collar On

Press and hold the On/Off button until you hear a beep. The LED will give one quick flash then flash once every 5 seconds (every 3 seconds when the battery is low).

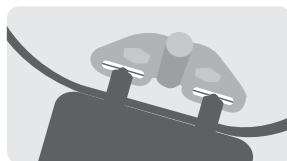
To Turn the Collar Off

Press and hold the On/Off button until the training collar beeps, and then release. The training collar turns off.

Quick Tip: When you are not using the collar, you will want to turn it off. This will increase the battery life.

Test the Collar

To test the collar, ensure that the remote is paired with the collar and the remote shows Dog 1. Then press the test light tool against the contact points on the collar, and push the action button on the remote while in static mode. The test light should flash.



Two Dog System

If you wish to add another collar to the training system, an Add-A-Dog® collar is available for purchase through our Customer Care Center.

Add-A-Dog® Pairing

With the purchase of a Premier Pet™ Add-A-Dog® training collar, this remote can be paired with two collars. Ensure that the remote is on the correct Dog 1/2 setting when pairing a collar, and follow the steps above.

1. Turn the collar off.
2. Press and hold the on/off button. The LED light will turn on, then off in 4-5 seconds.
3. After the collar LED has turned off, release the on/off button.
4. With Dog 2 selected on the remote, press and hold any button on the remote until the collar LED light flashes 5 times.
5. Pairing is now complete and the trainer is ready to use.

Find the Best Stimulation Level

Important: Always start at the lowest level and work your way up.

The Remote Trainer has 1 tone, 1 vibration, and 99 static stimulation levels. This allows you to choose the stimulation level that is best for your pet. We recommend training with tone and vibration, or the lower levels of static correction when needed.

Once you have placed the training collar on your pet, it is time to find the “recognition level”. The “recognition level” is the stimulation level that your dog begins to notice. It should not make your pet uncomfortable. Your pet should NOT vocalize or panic when receiving stimulation. If this happens, the stimulation is too high and you need to go back to the previous level.

Follow the steps below to find your pet’s recognition level:

- Choose the tone or vibration mode, and press the action button continuously for 1 to 2 seconds.
- If your pet shows no reaction, repeat this several times before moving to static stimulation.
- Choose level 1 and press the action button continuously for 1 to 2 seconds.
- If your pet shows no reaction, repeat this stimulation level several times before moving up to the next level.
- Move up through the static stimulation levels until your pet reliably responds to the stimulation.
- If your pet continues to show no response at level 99, check the fit of the training collar. You might also want to test it on your hand at a lower level to ensure the collar is working.

If all of these steps have been done and your pet continues to show no reaction to the stimulation, please contact our Customer Care Center.

Terms of Use and Limitation of Liability

1. Terms of Use

The use of this product is subject to your acceptance without modification of the terms, conditions and notices contained with this product. Use of this product implies acceptance of all such terms, conditions, and notices. If you do not wish to accept these terms, conditions, and notices, please return the Product, unused, in its original packaging and at your own cost and risk to the relevant Customer Care location together with proof of purchase for a full refund.

2. Proper Use

Proper Use includes, without limitation, reviewing the entire Operating Guide and any specific safety information statements. The specific temperament or size/weight of your pet may not be suitable for this product. If you are unsure whether this Product is appropriate for your pet, please consult your veterinarian or certified trainer prior to use. For products used with pets where training is desired, Radio Systems Corporation recommends that these training products are not used if your pet is aggressive and accepts no liability for determining suitability in individual cases.

3. No Unlawful or Prohibited Use

This product is designed for use with pets only. This product is not intended to harm, injure or provoke. Using this product in a way that is not intended could result in violation of Federal, State or local laws.

4. Limitation of Liability

In no event shall Radio Systems Corporation or any of its associated companies be liable for (i) any direct, indirect, punitive, incidental, special or consequential damage and/or (ii) any loss or damages whatsoever arising out of or connected with the use or misuse of this product. The Purchaser assumes all risks and liability from the use of this product to the fullest extent permissible by law.

5. Modification of Terms and Conditions

Radio Systems Corporation reserves the right to change the terms, conditions and notices governing this product from time to time. If such changes have been notified to you prior to your use of this product, they shall be binding on you as if incorporated herein.

Warranty

One Year Non-Transferrable Limited Warranty

This Product has the benefit of a limited manufacturer’s warranty. Complete details of the warranty applicable to this Product and its terms can be found at premierpet.com.

Compliance

FCC

This device complies with part 15 of the FCC Rules. Operation is subject to the following two conditions: (1) This device may not cause harmful interference, and (2) this device must accept any interference received, including interference that may cause undesired operation.

NOTE: This equipment has been tested and found to comply with the limits for a Class B digital device, pursuant to part 15 of the FCC Rules. These limits are designed to provide reasonable protection against harmful interference in a residential installation. This equipment generates, uses, and can radiate radio frequency energy and, if not installed and used in accordance with the instructions, may cause harmful interference to radio communications. However, there is no guarantee that interference will not occur in a specific installation. If interference does occur to radio or television reception, which can be determined by turning the equipment off and on, the user is encouraged to try to correct the interference by one or more of the following measures:

- Reorient or relocate the receiving antenna.
- Increase the separation between the equipment and the receiver.
- Connect the equipment to an outlet on a circuit different from that to which the receiver is connected.
- Consult customer care, the dealer, or an experienced radio/TV technician for help.

CAUTION: Modification or changes to this equipment not expressly approved by Radio Systems Corporation may void the user’s authority to operate the equipment.

Premier PetTM

Premier PetTM

Premier Pet™